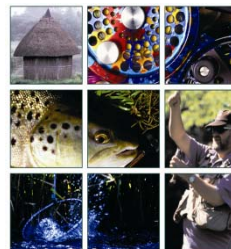


## JUNE FISHING ADVICE



### TACTICS

**After the Mayfly brace yourself for a radical re-thinking of your tactics. Identifying and matching the hatch gets harder and the fish will be more prone to focus on particular flies or a stage in their emergence.**

Think harder about lighter tippet, concealment and keeping the sun to your face. Shadows and line flash will give you away in a moment. Be prepared to change your fly often; if your target fish ignores a fly more than twice, change size or fly.



Stonehenge

### WEATHER

June is the month of the summer solstice (June 21) and the longest days of the year with sunrise around 5am and sunset 9pm. Given a choice between starting at daybreak or fishing at dusk, I would always choose the latter. The morning is often still a bit chilly and until the heat gets into the day the hatches will not start. Sharp, hard rain showers are a godsend on hot days. If you can bear it, fish during the rain.

### TACKLE TIPS

Light tippet to 2lb. A choice of your favourite flies in a variety of sizes. Apply mud or gink on the final six inches of tippet to remove the shine'.



## HATCHES

These are the five main groups to be found on the chalkstreams during June:

### Blue winged olive

The definitive chalkstream fly that is the most widespread of the summer olives. The four stages in the lifecycle are all attractive to trout

Nymph	Pheasant Tail Nymph	Size 14-16
Emerger	Parachute Adams	14
Dun	Blue Winged Olive	14-18
Spinner	Sherry Spinner	16-18



Blue Winged Olive

### Black Gnat

A generic name for a variety of small flat winged terrestrials that hatch in abundance. Trout will feed avidly when they get the taste for them.

Black Gnat 14-18



Black Gnat

### Medium Olive

Prolific summer hatches covering a variety of species.

Parachute Adams	16
Greenwell's Glory	16
Lunn's Particular	14-16



Parachute Adams

### Midges

A favourite on stillwaters but not to be ignored on rivers where the 'buzzers' are in abundance all year round.

Bloodworm	12
CDC Shuttlecock	12-14
Pheasant Tail Nymph	14-18
Knotted Midge	16-18



Knotted Midge

### Sedges

There are over 30 British caddis species, but they are all fairly similar from an angler's viewpoint. A few different patterns will cover them all.

Cinnamon Sedge 10-12  
Elk Hair Caddis 14  
Caperer 12-14  
Goddard Caddis 12-14  
Grey Klinkhammer 12-14 (Emerger)



Elk Hair Caddis



Blue Winged Olive



Olive Emerger



Midge



Sedge